

3 TECHNICAL SPECIFICATIONS

This chapter describes the technical specifications and characteristics of the GTS 484 - S12 tower crane in the four versions available, and their corresponding configurations.

3.1 CRANE CLASSIFICATION

Standards for structural calculations of the crane:

C.N.R. 10021/85; C.N.R. 10011/85; C.N.R. UNI 10012
DIN 15018; DIN 15019; DIN 15020

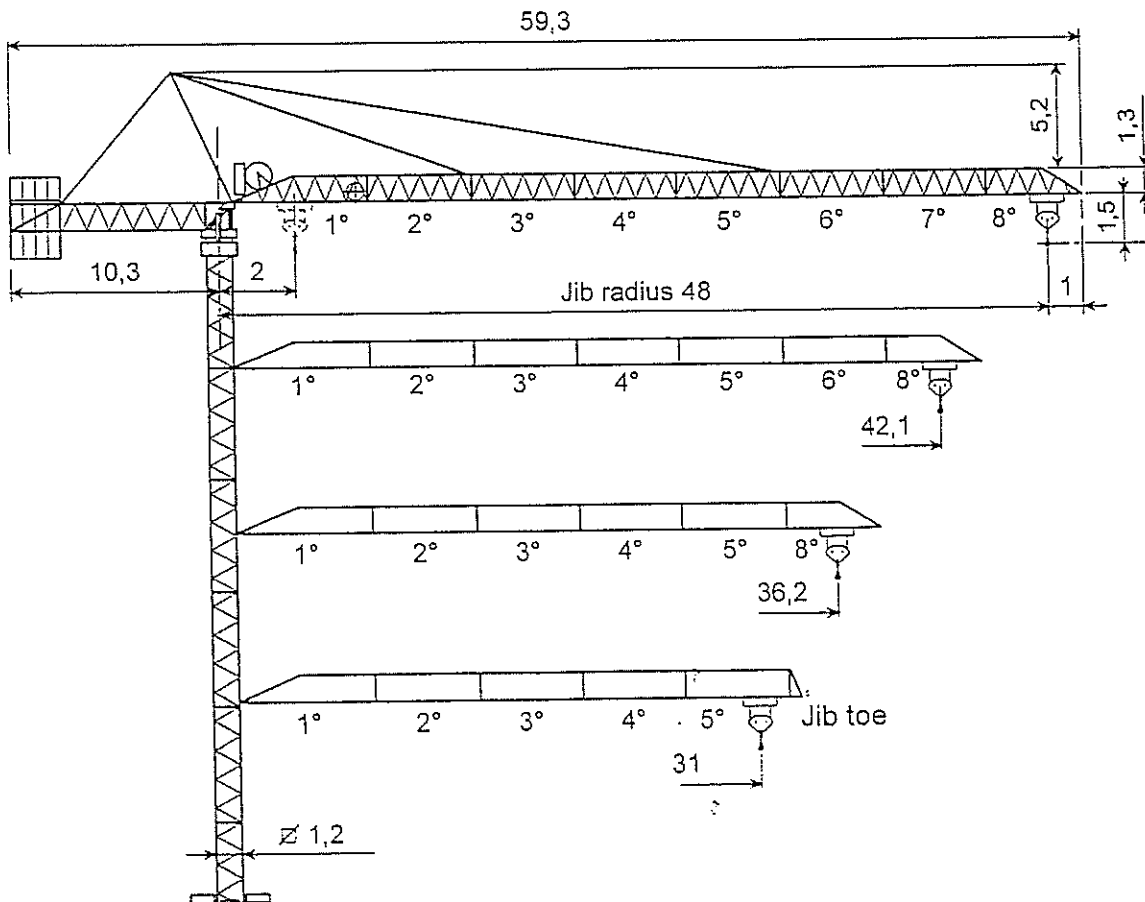
Machine class:

according to standard C.N.R. 10021, this machine belongs to class A4 (U4 - Q2)

Standards for the electrical components: CEI - EN 60204 - 1

3.2 VERSIONS AND CONFIGURATIONS

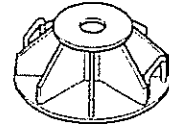
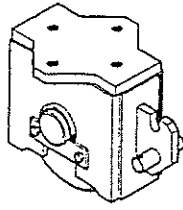
The typical dimensions of the crane are shown in figure 3.1 together with the different approved jib radii and the composition of the single jibs.



The heights that can be reached by the crane in the four different configurations are shown in figure 3.2.

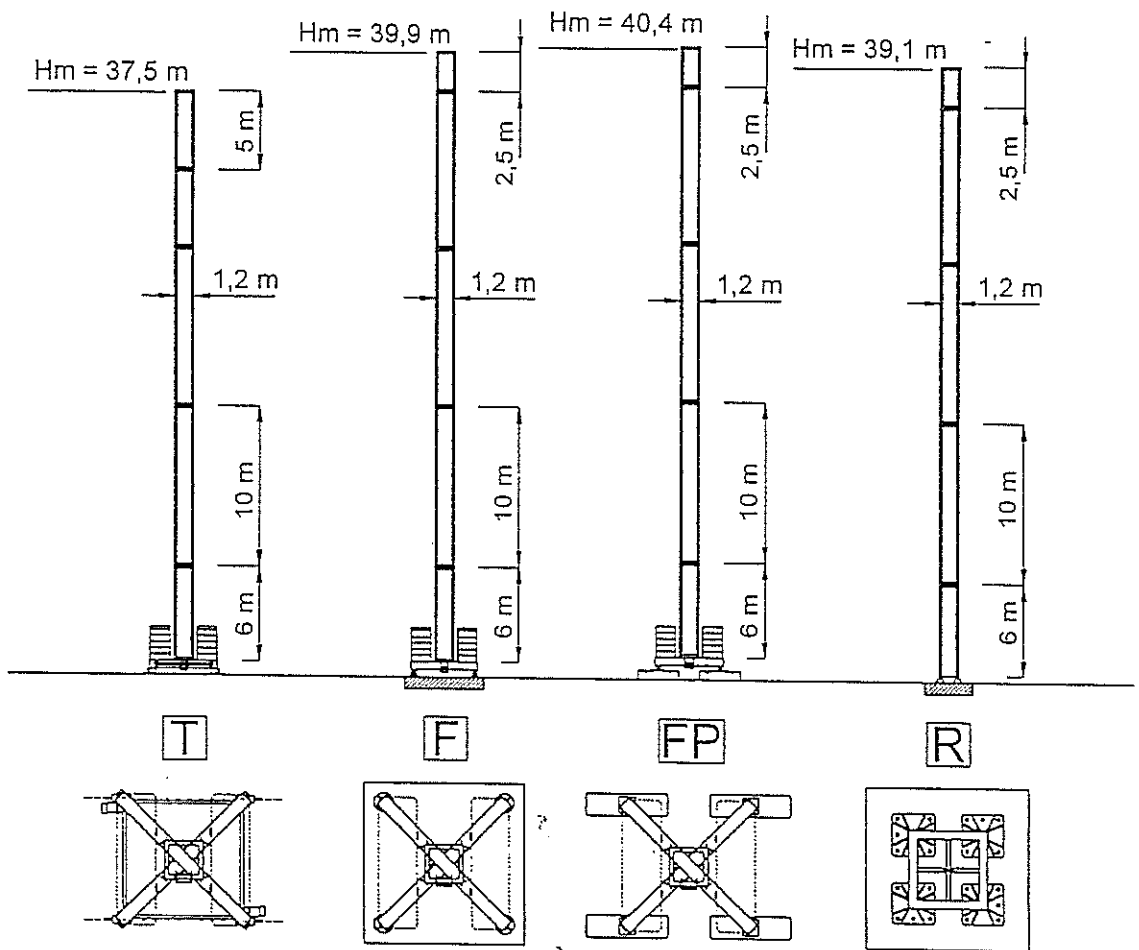
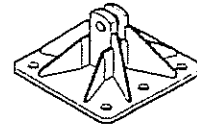
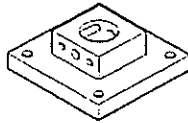
T: travelling crane on chassis

F: fixed crane with chassis on base plates



FP: fixed crane with chassis on plinths

R: fixed crane without chassis



Hm = maximum height under hook

Fig. 3.2

3.3 LOAD TABLE

Depending on the capacity, there are four different versions of cranes with the following characteristics and specifications:

VERSION 14-20

Radius and capacity [m]	10	12	15	18	21	27	31	33	36,2	38	42,1	45	48
2 t - 34,83 m (II) [t]	2	2	2	2	2	2	2	2	1,93	1,83	1,63	1,5	1,4
2 t - 37,07 m (II) [t]	2	2	2	2	2	2	2	2	2	1,96	1,75		
2 t - 36,30 m (II) [t]	2	2	2	2	2	2	2	2	2				
2 t - 31 m (II) [t]	2	2	2	2	2	2	2	2					

VERSION 13-30

Radius and capacity [m]	10	12	15	18	21	27	31	33	36,2	38	42,1	45	48
3 t - 23,53 m (II) [t]	3	3	3	3	3	2,59	2,21	2,05	1,84	1,73	1,53	1,41	1,3
3 t - 25 m (II) [t]	3	3	3	3	3	2,77	2,36	2,20	1,97	1,86	1,56		
3 t - 26,30 m (II) [t]	3	3	3	3	3	2,93	2,51	2,33	2,10				
3 t - 27,10 m (II) [t]	3	3	3	3	3	3	2,60						

VERSION 13-40

Radius and capacity [m]	10	12	15	18	21	27	31	33	36,2	38	42,1	45	48
2 t - 33,82 m (II) [t]	2	2	2	2	2	2	2	2	1,84	1,73	1,53	1,41	1,3
4 t - 18,17 m (IV) [t]	4	4	4	4	3,40	2,55	2,17	2,01	1,84	1,73	1,53	1,41	1,3
2 t - 35,88 m (II) [t]	2	2	2	2	2	2	2	2	1,97	1,86	1,65		
4 t - 19,21 m (IV) [t]	4	4	4	4	3,64	2,74	2,33	2,16	1,93	1,86	1,65		
2 t - 36,2 m (II) [t]	2	2	2	2	2	2	2	2	2				
4 t - 20,27 m (IV) [t]	4	4	4	4	3,84	2,9	2,47	2,30	2,06				
2 t - 31 m (II) [t]	2	2	2	2	2	2	2						
4 t - 10,87 m (IV) [t]	4	4	4	4	3,97	3	2,56						

VERSION 13-60

Radius and capacity [m]	10	12	15	18	21	27	31	33	36,2	38	42,1	45	48
3 t - 23,49 m (II) [t]	3	3	3	3	3	2,56	2,19	2,04	1,83	1,72	1,52	1,4	1,3
6 t - 11,83 m (IV) [t]	6	5,91	4,60	3,73	3,11	2,28	1,91	1,76	1,55	1,44	1,24	1,12	1,02
3 t - 25,03 m (II) [t]	3	3	3	3	3	2,75	2,35	2,19	1,97	1,86	1,65		
6 t - 12,61 m (IV) [t]	6	6	4,94	4,02	3,35	2,47	2,07	1,91	1,69	1,58	1,37		
3 t - 26,41 m (II) [t]	3	3	3	3	3	2,92	2,5	2,33	2,1				
6 t - 13,30 m (IV) [t]	6	6	5,25	4,27	3,57	2,64	2,22	2,05	1,82				